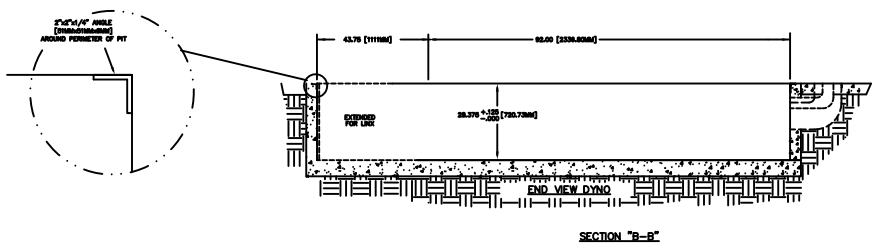
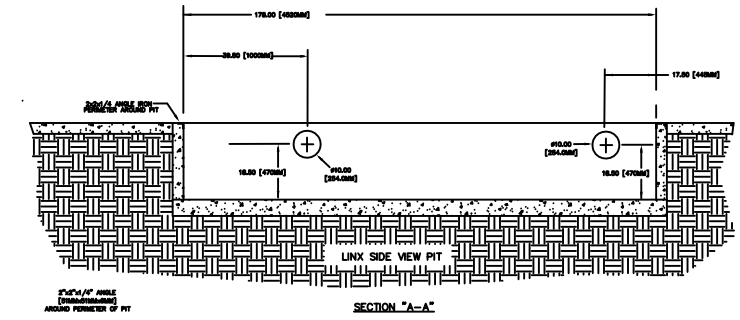
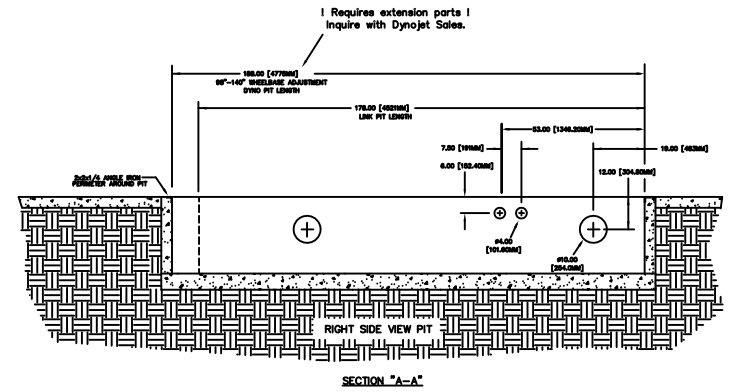
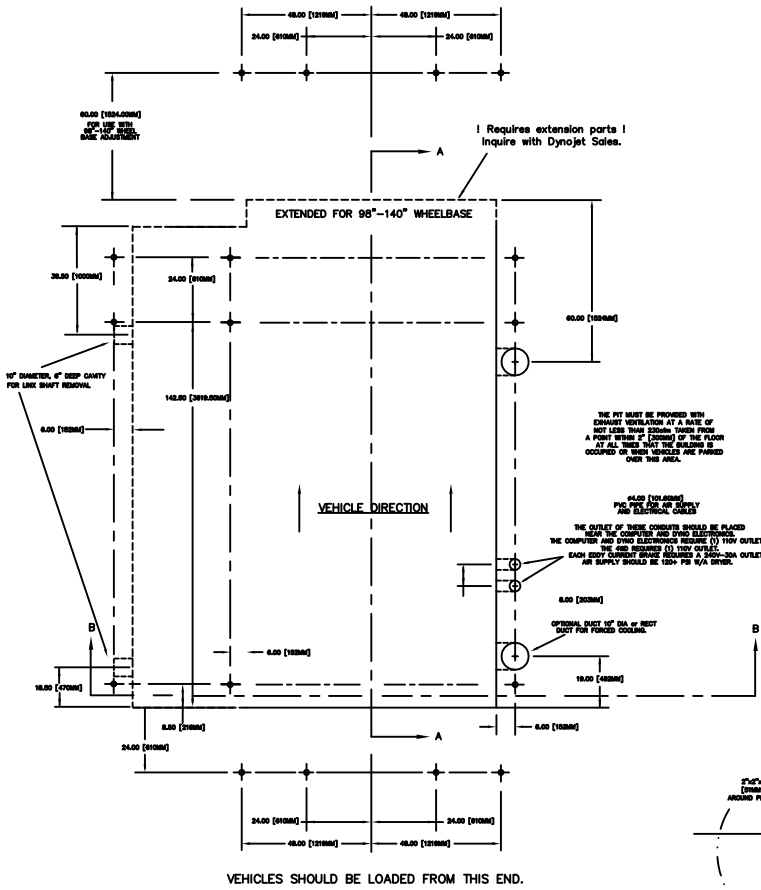


| REV | | DESCRIPTION | DATE | APPROVED |
|-------|----|-------------|----------|----------|
| 12592 | 01 | RELEASED | 03/21/17 | GLE |

EXTENDED WHEELBASE WITH LINX AND WITHOUT EDDY CURRENT BRAKE

EXTENDED WHEELBASE

- NOTES:**
- ALL DIMENSIONS ARE NORMAL TO FACE OF MASONRY OR TO FACE OF METAL STUD.
 - ALL WORK SHALL BE IN ACCORDANCE WITH LOCAL AND STATE AND OR ANY OTHER GOVERNING CODE REQUIREMENTS.
 - VERIFY ALL UNDERGROUND UTILITIES BEFORE EXCAVATION.
- STRUCTURAL NOTES**
- CODES AND STANDARDS**
THE PROJECT WAS DESIGNED IN ACCORDANCE WITH THE STANDARD BUILDING CODE 1991 EDITION.
 - FOUNDATION**
ALL SITE PREPARATION AND EXCAVATION WORK IS TO BE PERFORMED IN STRICT ACCORDANCE WITH THE RECOMMENDATIONS OF SOILS AND FOUNDATIONS INVESTIGATION PREPARED BY AN APPROVED TESTING LABORATORY PRIOR TO FOUNDATION WORK.
BOTTOM OF FOOTINGS TO BEAR ON SOIL CAPABLE OF SAFELY SUPPORTING 2000 PSF.
SOILS SUPPORTING ALL FOOTINGS MUST BE INSPECTED AND APPROVED BY A REGISTERED SOILS ENGINEER BEFORE CONSTRUCTION WORK. APPROVAL IS BEING MADE INDICATE THE SOIL IS ADEQUATE TO SAFELY SUSTAIN SPECIFIED SOIL BEARING PRESSURE.
 - CONCRETE**
ALL CONCRETE SHALL BE READY MIX, HAVE A MINIMUM COMPRESSIVE STRENGTH OF 3000 PSI @ 28 DAYS AND HAVE A MINIMUM OF 8% AIR. USE OF COARSE FINE AGGREGATE.
ALL THE CONCRETE WORK SHALL COMPLY WITH THE REQUIREMENTS OF THE ACI BUILDING CODE (ACI 308.1 LATEST EDITION), THE ACI STRUCTURAL MANUAL (ACI 308.1 LATEST EDITION), AND THE SPECIFICATIONS FOR STRUCTURAL CONCRETE FOR BUILDINGS (ACI 308.1 LATEST EDITION).
ALL REINFORCING STEEL SHALL BE MANUFACTURED FROM HIGH STRENGTH BILLET STEEL CONFORMING TO ASTM SPECIFICATION A 616 GRADE 60. SPICES TO LAY 90 DEGREE CONCRETE CORNER. USE 3" ADJUST EARTH @ 3/16".
THE PIT WALLS CAN BE CONSTRUCTED FROM MASONRY BRICK AS ALTERNATE CONCRETE CONSTRUCTION TO INSURE THE WALLS WILL STILL MEET THE CODES AND STRUCTURAL STANDARDS.
 - MASONRY**
MASONRY UNITS SHALL BE ASTM C 90 GRADE II. ALL MORTAR SHALL BE TYPE S (OR TYPE M) IN ACCORDANCE WITH ASTM SPECIFICATION C 270.
PROVIDE NOT DIPPED BALANCED BRASS TYPE HORIZONTAL REINFORCEMENT (MIN 6 GAL) AT 16" ON CENTER INTERVAL IN ALL MASONRY WALLS. PROVIDE ONE TIE SLIP ANCHORS AT CONCRETE COLUMNS.



| | | | |
|--|--------------|---|----------------------------|
| MATERIAL: N/A | | DYNOJET RESEARCH 200 ARDEN DRIVE, BELGRADE MT 59714 | |
| FINISH: N/A | | | |
| UNLESS OTHERWISE SPECIFIED: TOLERANCES | | 424-2 W/EXT WB AND LINX PIT DIMENSIONS | |
| DECIMAL | FRACTIONAL | | |
| ±.003 ± 0.10 | ± 1/16 | | |
| ±.000 ± 0.060 | ANGULAR ± 5° | | |
| DO NOT SCALE THIS DRAWING | | | |
| CREATED: | CTS 01/13/06 | SIZE | PART NO. |
| LAST UPDATE: | GLE 04/05/17 | D | 98219119 |
| DESIGNED: | KAN | REV | 01 |
| APPROVED: | | SCALE: 1:20 | RELEASE DATE: SHEET 1 OF 5 |

ALL IDEAS, DESIGNS, ARRANGEMENTS AND PLANS INDICATED OR REPRESENTED BY THIS DRAWING ARE OWNED BY DYNODET RESEARCH, INC. AND WERE CREATED, EVOLVED AND DEVELOPED FOR USE ON AND IN CONNECTION WITH THE SPECIFIED PROJECT. NONE OF SUCH IDEAS, DESIGNS, ARRANGEMENTS OR PLANS SHALL BE USED BY OR DISCLOSED TO ANY PERSON, FIRM OR CORPORATION FOR ANY PURPOSE WHATSOEVER WITHOUT THE WRITTEN PERMISSION OF DYNODET RESEARCH, INC.

| REVISIONS | | | | |
|-----------|-----|-------------|----------|----------|
| ECR# | REV | DESCRIPTION | DATE | APPROVED |
| 12592 | 01 | RELEASED | 03/21/17 | GLE |

NOTES:

1. ALL DIMENSIONS ARE NOMINAL TO FACE OF MASONRY OR TO FACE OF METAL STUD.
2. ALL WORK SHALL BE IN ACCORDANCE WITH LOCAL AND STATE AND OR ANY OTHER GOVERNING CODE REQUIREMENTS.
3. VERIFY ALL UNDERGROUND UTILITIES BEFORE EXCAVATION.

STRUCTURAL NOTES

1. CODES AND STANDARDS
THE PROJECT WAS DESIGNED IN ACCORDANCE WITH THE STANDARD BUILDING CODE 1991 EDITION.
2. FOUNDATION
ALL SITE PREPARATION AND EXCAVATION WORK IS TO BE PERFORMED IN STRICT ACCORDANCE WITH THE RECOMMENDATIONS ON SOILS AND FOUNDATIONS INVESTIGATION PREPARED BY AN APPROVED TESTING LABORATORY PRIOR TO FOUNDATION WORK.

BOTTOM OF FOOTINGS TO BEAR ON SOIL CAPABLE OF SAFELY SUPPORTING 2500 PSF.

SOILS SUPPORTING ALL FOOTINGS MUST BE INSPECTED AND APPROVED BY A REGISTERED SOILS ENGINEER BEFORE COMMENCING WORK. APPROVAL IN WRITING MUST INDICATE THE SOIL IS ADEQUATE TO SAFELY SUSTAIN SPECIFIED SOIL BEARING PRESSURE.
3. CONCRETE
ALL CONCRETE SHALL BE READY MIX, HAVE A MINIMUM COMPRESSIVE STRENGTH OF 2800 PSI @ 28 DAYS AND HAVE A MINIMUM OF 517 LBS. OF CEMENT PER CUBIC YARD.

ALL THE CONCRETE WORK SHALL COMPLY WITH THE REQUIREMENTS OF THE ACI BUILDING CODE (ACI 318/LATEST EDITION), THE ACI DETAILING MANUAL (ACI 315/LATEST EDITION), AND THE SPECIFICATIONS FOR STRUCTURAL CONCRETE FOR BUILDINGS (ACI 301/LATEST EDITION)

ALL REINFORCING STEEL SHALL BE MANUFACTURED FROM HIGH STRENGTH BILLET STEEL CONFORMING TO ASTM DESIGNATION A 615 GRADE 60. SPLICES TO LAP MIN 25". CONCRETE COVER MIN. 3" AGAINST EARTH @ SLAB

THE PIT WALLS CAN BE CONSTRUCTED FROM MASONRY BRICK AS ALWAYS CONSULT YOUR CONTRACTOR TO ENSURE THE WALLS WILL STILL MEET THE CODES AND STRUCTURAL STANDARDS
4. MASONRY
MASONRY UNITS SHALL BE ASTM C 90 GRADE N. ALL MORTAR SHALL BE TYPE S (OR TYPE M) IN ACCORDANCE WITH ASTM SPECIFICATION C270.

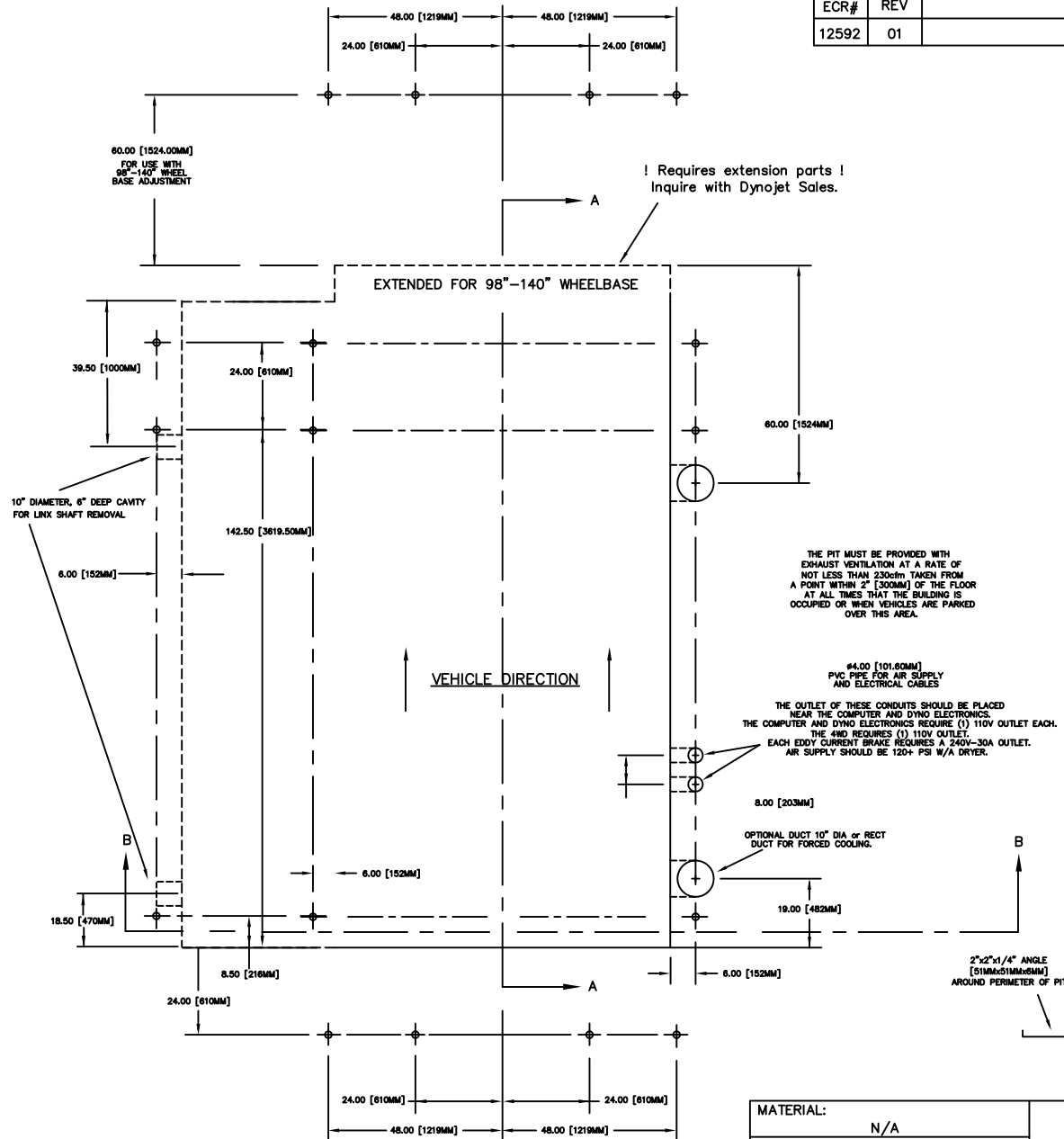
PROVIDE HOT DIPPED GALVANIZED TRUSS TYPE HORIZONTAL REINFORCEMENT (MIN 9 GA.) AT 16" ON CENTER VERTICFAL IN ALL MASONRY WALLS. PROVIDE DOVE TAIL SLOT ANCHORS AT CONCRETE COLUMNS.

| | | | | |
|---|-----------------|---|---------------|--------------|
| MATERIAL: N/A | | DYNOJET RESEARCH 200 ARDEN DRIVE, BELGRADE MT 59714 | | |
| FINISH: N/A | | | | |
| UNLESS OTHERWISE SPECIFIED: TOLERANCES | | 424-2 W/EXT WB AND LINX PIT DIMENSIONS | | |
| DECIMAL | FRACTIONAL | | | |
| X.XX ± 0.01 | ± 1/16 | | | |
| X.XXX ± 0.005 | ANGULAR ± 5' | | | |
| DO NOT SCALE THIS DRAWING | | | | |
| CREATED: | CTS 01/13/06 | | | |
| LAST UPDATE: | GLE 04/05/17 | SIZE | PART NO. | |
| DESIGNED: | JE | A | 98219119 | |
| APPROVED: | | | REV | 01 |
| | | SCALE: X:X | RELEASE DATE: | SHEET 2 OF 5 |

ALL IDEAS, DESIGNS, ARRANGEMENTS AND PLANS INDICATED OR REPRESENTED BY THIS DRAWING ARE OWNED BY DYNOJET RESEARCH INC. AND WERE CREATED, EVOLVED AND DEVELOPED FOR USE ON AND IN CONNECTION WITH THE SPECIFIED PROJECT. NONE SUCH IDEAS, DESIGNS, ARRANGEMENTS OR PLANS SHALL BE USED BY OR DISCLOSED TO ANY PERSON, FIRM, OR CORPORATION FOR ANY PURPOSE WHATSOEVER WITHOUT THE WRITTEN PERMISSION OF DYNOJET RESEARCH, INC.

DYNOJET RESEARCH, INC.

| REVISIONS | | | | |
|-----------|-----|-------------|----------|----------|
| ECR# | REV | DESCRIPTION | DATE | APPROVED |
| 12592 | 01 | RELEASED | 03/21/17 | GLE |



! Requires extension parts !
Inquire with Dynojet Sales.

THE PIT MUST BE PROVIDED WITH EXHAUST VENTILATION AT A RATE OF NOT LESS THAN 230cfm TAKEN FROM A POINT WITHIN 2' (300MM) OF THE FLOOR AT ALL TIMES THAT THE BUILDING IS OCCUPIED OR WHEN VEHICLES ARE PARKED OVER THIS AREA.

THE OUTLET OF THESE CONDUITS SHOULD BE PLACED NEAR THE COMPUTER AND DYNO ELECTRONICS. THE COMPUTER AND DYNO ELECTRONICS REQUIRE (1) 110V OUTLET EACH. THE 4WD REQUIRES (1) 110V OUTLET. EACH EDDY CURRENT BRAKE REQUIRES A 240V-30A OUTLET. AIR SUPPLY SHOULD BE 120+ PSI W/A DRYER.

2"x2"x1/4" ANGLE
(51MMx51MMx6MM)
AROUND PERIMETER OF PIT

VEHICLES SHOULD BE LOADED FROM THIS END.

| | |
|---|-----------------|
| MATERIAL: | N/A |
| FINISH: | N/A |
| UNLESS OTHERWISE SPECIFIED: TOLERANCES | |
| DECIMAL | FRACTIONAL |
| X.XX ± 0.01 | ± 1/16 |
| X.XXX ± 0.005 | ANGULAR ± 5° |
| DO NOT SCALE THIS DRAWING | |
| CREATED: | CTS 01/13/06 |
| LAST UPDATE: | GLE 04/05/17 |
| DESIGNED: | JE |
| APPROVED: | |

DYNOJET RESEARCH

200 ARDEN DRIVE, BELGRADE MT 59714

424-2 W/EXT WB AND LINX PIT DIMENSIONS

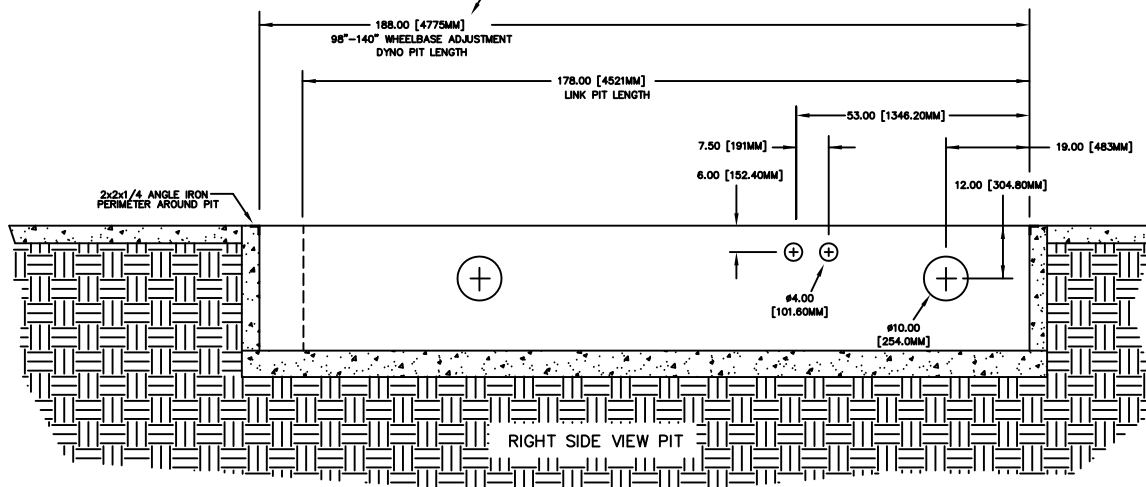
ALL IDEAS, DESIGNS, ARRANGEMENTS AND PLANS INDICATED OR REPRESENTED BY THIS DRAWING ARE OWNED BY DYNOJET RESEARCH INC. AND WERE CREATED, EVOLVED AND DEVELOPED FOR USE ON AND IN CONNECTION WITH THE SPECIFIED PROJECT. NONE SUCH IDEAS, DESIGNS, ARRANGEMENTS OR PLANS SHALL BE USED BY OR DISCLOSED TO ANY PERSON, FIRM, OR CORPORATION FOR ANY PURPOSE WHATSOEVER WITHOUT THE WRITTEN PERMISSION OF DYNOJET RESEARCH, INC..

| | | | | | | | | | | |
|---|---------------|--------------|-----|---|----------|----|--|-------------|---------------|--------------|
| <table border="1"> <tr> <td>SIZE</td> <td>PART NO.</td> <td>REV</td> </tr> <tr> <td>A</td> <td>98219119</td> <td>01</td> </tr> </table> | SIZE | PART NO. | REV | A | 98219119 | 01 | <table border="1"> <tr> <td>SCALE: X: X</td> <td>RELEASE DATE:</td> <td>SHEET 3 OF 5</td> </tr> </table> | SCALE: X: X | RELEASE DATE: | SHEET 3 OF 5 |
| SIZE | PART NO. | REV | | | | | | | | |
| A | 98219119 | 01 | | | | | | | | |
| SCALE: X: X | RELEASE DATE: | SHEET 3 OF 5 | | | | | | | | |

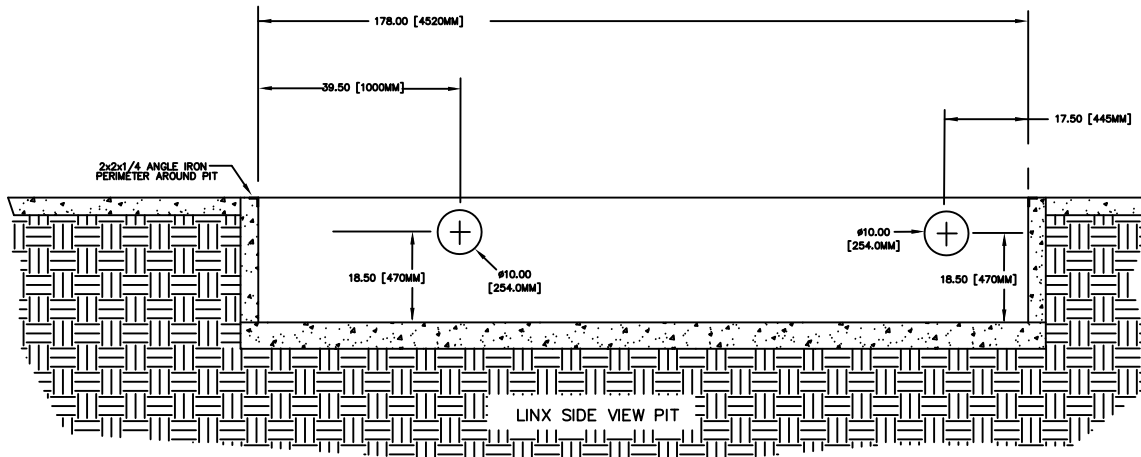
EXTENDED WHEELBASE

! Requires extension parts !
Inquire with Dynojet Sales.

| REVISIONS | | | | |
|-----------|-----|-------------|----------|----------|
| ECR# | REV | DESCRIPTION | DATE | APPROVED |
| 12592 | 01 | RELEASED | 03/21/17 | GLE |



SECTION "A-A"



SECTION "A-A"

2"x2"x1/4" ANGLE
[51MMx51MMx6MM]
AROUND PERIMETER OF PIT

| | |
|---|-----------------|
| MATERIAL: | N/A |
| FINISH: | N/A |
| UNLESS OTHERWISE SPECIFIED: TOLERANCES | |
| DECIMAL | FRACTIONAL |
| X.XX ± 0.01 | ± 1/16 |
| X.XXX ± 0.005 | ANGULAR ± 5° |
| DO NOT SCALE THIS DRAWING | |
| CREATED: | CTS 01/13/06 |
| LAST UPDATE: | GLE 04/05/17 |
| DESIGNED: | JE |
| APPROVED: | |

DYNOJET RESEARCH

200 ARDEN DRIVE, BELGRADE MT 59714

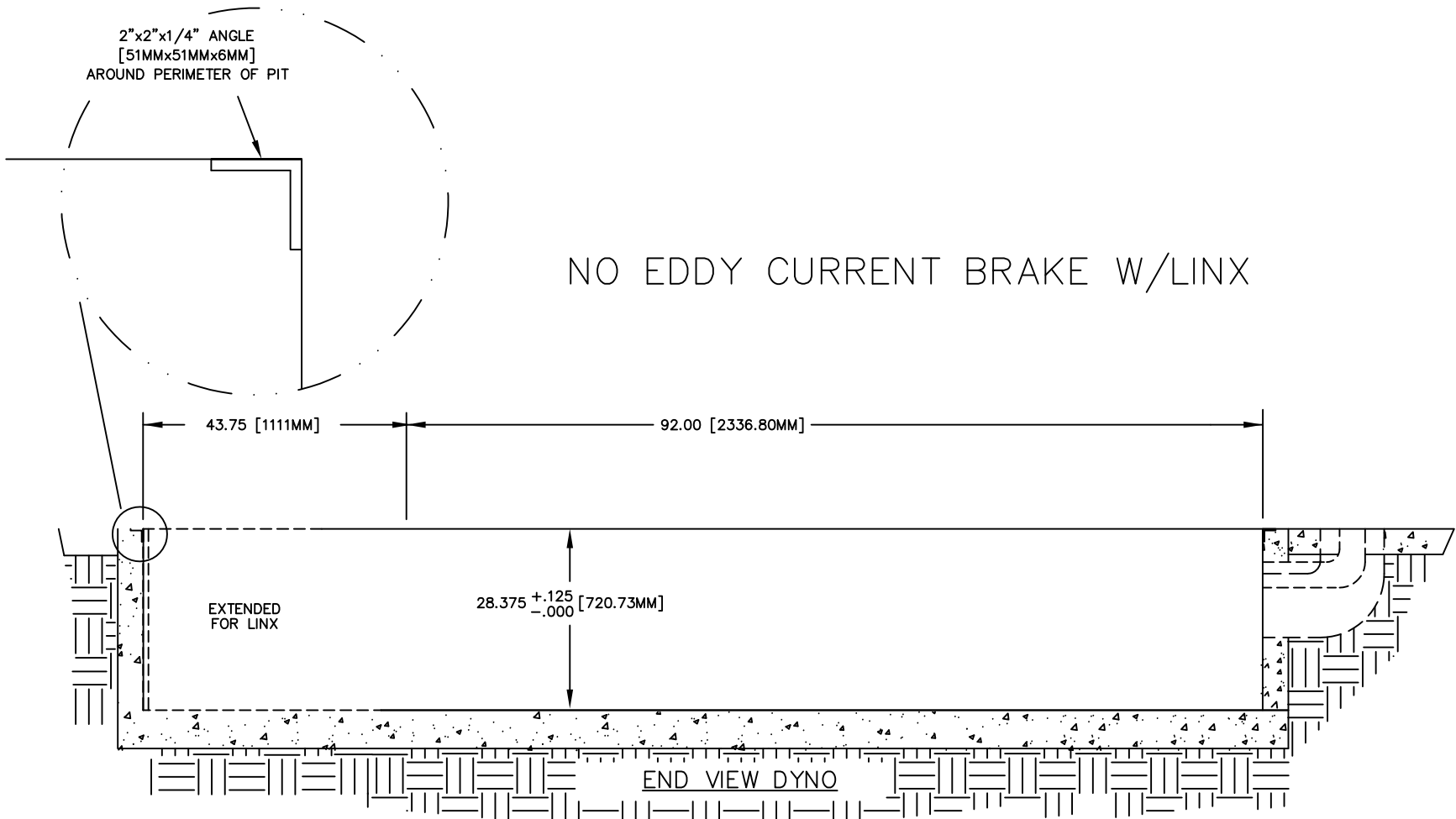
424-2 W/EXT WB AND LINX
PIT DIMENSIONS

ALL IDEAS, DESIGNS, ARRANGEMENTS AND PLANS INDICATED OR REPRESENTED BY THIS DRAWING ARE OWNED BY DYNOJET RESEARCH INC. AND WERE CREATED, EVOLVED AND DEVELOPED FOR USE ON AND IN CONNECTION WITH THE SPECIFIED PROJECT. NONE SUCH IDEAS, DESIGNS, ARRANGEMENTS OR PLANS SHALL BE USED BY OR DISCLOSED TO ANY PERSON, FIRM, OR CORPORATION FOR ANY PURPOSE WHATSOEVER WITHOUT THE WRITTEN PERMISSION OF DYNOJET RESEARCH, INC.

DYNOJET RESEARCH, INC.

| | | |
|-------------|---------------|--------------|
| SIZE | PART NO. | REV |
| A | 98219119 | 01 |
| SCALE: X: X | RELEASE DATE: | SHEET 4 OF 5 |

| REVISIONS | | | | |
|-----------|-----|-------------|----------|----------|
| ECR# | REV | DESCRIPTION | DATE | APPROVED |
| 12592 | 01 | RELEASE | 03/21/17 | GLE |



SECTION "B-B"

| | | | | |
|---|-----------------|---|---------------|--------------|
| MATERIAL: | N/A | DYNOJET RESEARCH 200 ARDEN DRIVE, BELGRADE MT 59714 | | |
| FINISH: | N/A | | | |
| UNLESS OTHERWISE SPECIFIED: TOLERANCES | | 424-2 W/EXT WB AND LINX PIT DIMENSIONS | | |
| DECIMAL | FRACTIONAL | | | |
| X.XX ± 0.01 | ± 1/16 | | | |
| X.XXX ± 0.005 | ANGULAR ± 5° | | | |
| DO NOT SCALE THIS DRAWING | | | | |
| CREATED: | CTS 01/13/06 | SIZE | PART NO. | REV |
| LAST UPDATE: | GLE 04/05/17 | A | 98219119 | 01 |
| DESIGNED: | JE | | | |
| APPROVED: | | SCALE: X:X | RELEASE DATE: | SHEET 5 OF 5 |

ALL IDEAS, DESIGNS, ARRANGEMENTS AND PLANS INDICATED OR REPRESENTED BY THIS DRAWING ARE OWNED BY DYNOJET RESEARCH INC. AND WERE CREATED, EVOLVED AND DEVELOPED FOR USE ON AND IN CONNECTION WITH THE SPECIFIED PROJECT. NONE SUCH IDEAS, DESIGNS, ARRANGEMENTS OR PLANS SHALL BE USED BY OR DISCLOSED TO ANY PERSON, FIRM, OR CORPORATION FOR ANY PURPOSE WHATSOEVER WITHOUT THE WRITTEN PERMISSION OF DYNOJET RESEARCH, INC.

DYNOJET RESEARCH, INC.