

NEW

POWER CORE SOFTWARE SUITE



POWERCORE IS A NEW PC BASED APPLICATION THAT PROVIDES DYNOJET DYNO OWNERS WITH THE MOST ADVANCED TUNING SOFTWARE PLATFORM AVAILABLE IN THE INDUSTRY! CONTROL THE DYNO, ANALYZE DATA, ADJUST/CREATE CALIBRATIONS AND MAPS, AND UTILIZE REAL-TIME ON-BOARD DATA FROM VEHICLES RUNNING ON THE DYNO.

WinPEP 8

WinPEP 8 Dyno

- CONNECTS POWERCORE TO DYNOWARE RT (DWRT); SHOWS DATA LIVE ON GAUGES, STARTS/STOPS SAMPLING, AND SETS UP OTHER FUNCTIONS SUCH AS LOAD CONTROL AND OTHER DYNO SPECIFIC FUNCTIONS.
- SELECTABLE RPM SOURCE USED FOR LOGGING/LOAD CONTROL – INDUCTIVE, OPTICAL, OBDII, DJ-CAN, OR 3RD PARTY RPM SOURCE
- SELECTABLE AIR/FUEL DATA SOURCE – DWRT AFR-2 OR DJ-CAN DEVICES
- CHANNEL SUPPORT FOR POPULAR NON-DYNOJET TUNING AND DATA LOGGING PLATFORMS
- CHANNEL SUPPORT FOR DYNOJET OBDII DATA-LINK INTERFACE



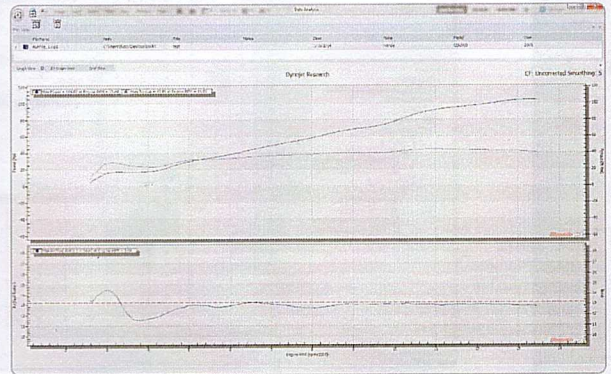
WINPEP 8 DYNO CONTROL ANALOG CHANNEL CONFIGURATION

- EDITABLE GAUGE SCREEN WITH USER DEFINED DATA CHANNEL SELECTION, SCALING AND MORE
- DWRT WIRELESS AND NETWORK CAPABILITY FOR USE WITH LAPTOP, DESKTOP AND TABLET PC'S

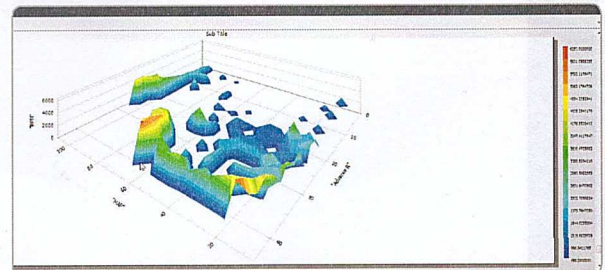
WinPEP 8 Data Center

Provides enhanced viewing and analysis tools for dyno runs, DJ-CAN devices, .csv format data logs, and 3rd party sources. Views include graph / trace, table, and 3-D visualization.

- LOAD UP TO 12 DYNO RUNS OR DATA LOGS, EACH OF WHICH CAN CONTAIN UP TO 40 CHANNELS
- SYNCHRONIZE DATA CHANNELS FROM THE DWRT SYSTEM IN PERFECT ALIGNMENT WITH CHANNELS FROM SUPPORTED SYSTEMS, GIVING THE ABILITY TO "SEE" WHAT HAPPENED AND WHERE. BECOME A BETTER TUNER AS A RESULT OF GETTING BETTER DATA.
- CUSTOMIZATION OPTIONS ALLOW USERS TO ADJUST THE SOFTWARE FORMAT AND VIEWING TO THEIR LIKING, AND PROVIDES BETTER EXPORT VIEWING, PRINTING AND MORE.
- BACKWARDS COMPATIBLE TO ALL PREVIOUS WINPEP AND DOSPEP DYNO RUNS, SO USERS CAN USE PREVIOUS DYNO RUN FILES.



GRAPH/TRACE VIEW



3D VIEW



GRID VIEW

NEW DynoWare RT

THE NEXT GENERATION OF DYNOJET DYNAMOMETER ELECTRONICS AND SOFTWARE HAS ARRIVED.

DynoWare RT (DWRT) replaces the previous generation Dynojet DynoWare EX+ and is designed for use with the NEW PowerCore software suite which is included with DWRT. This software suite features the NEW WinPEP 8 Dyno Control and Data Analysis software.

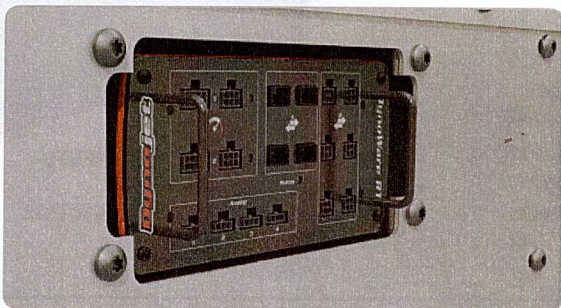
DWRT comes standard with new Dynojet dynamometers and is available as an upgrade for existing Dynojet models. Unlike the modular DynoWare EX+, DWRT consists of one main control module with expansion ports to handle any additional data acquisition needs. DWRT operates on the Dynojet Controller Area Network (DJ-CAN) system, which makes connecting accessories a simple and easy process. DWRT provides Dynojet dyno owners with as much data input as they will ever need.



MAIN CONTROL MODULE AND 10-BUTTON PENDANT SHOWN.

STANDARD FEATURES

- **ETHERNET COMMUNICATIONS**
- **WIRELESS NETWORK CAPABILITY.** Connect a wireless router to DWRT to control the dyno and PowerCore using a laptop, desktop or tablet PC. Update firmware and software through a internet network.
- **10 BUTTON ENHANCED SAMPLE PENDANT** For remote control of DWRT and PowerCore
- **TWO ATMOSPHERIC SENSOR INPUTS.** Includes one (1) sensor for real-time weather conditions measurement. Secondary sensor accessory available for additional measurement (intake, air box, etc.).
- **TWO INDUCTIVE RPM INPUTS (up to 30,000 RPM).** Includes two (2) primary and one (1) secondary inductive RPM cables for use with various ignition types including coil on plug.
- **TWO OPTICAL RPM INPUTS (up to 30,000RPM).** For use with Dynojet Optical RPM accessory- (not included).
- **FOUR INDEPENDENT 0-5V ANALOG INPUTS.** Sensors not included. Accessory plug-and-play Dynojet Sensor Kits available for measuring pressure (boost or fuel) and temperature (thermocouple amplifiers). Analog Sensor Cable Kit also available to connect customer supplied sensors to DWRT.
- **FOUR DJ-CAN (Dynojet Controller Area Network) EXPANSION PORTS** To connect Dynojet performance electronics such as Power Vision, Power Commander V, Autotune, etc.
- **SIX DYNOWARE EXPANSION PORTS** (for DWRT dyno accessories)
- **TWO INFRARED TEMPERATURE SENSOR INPUTS.**
- **POWERCORE SOFTWARE SUITE WITH WINPEP 8 DYNO CONTROL AND DATA CENTER, ALONG WITH C3 TUNING SOFTWARE ARE INCLUDED.**



INSTALLED ON A MODEL 250I DYNAMOMETER

NEW

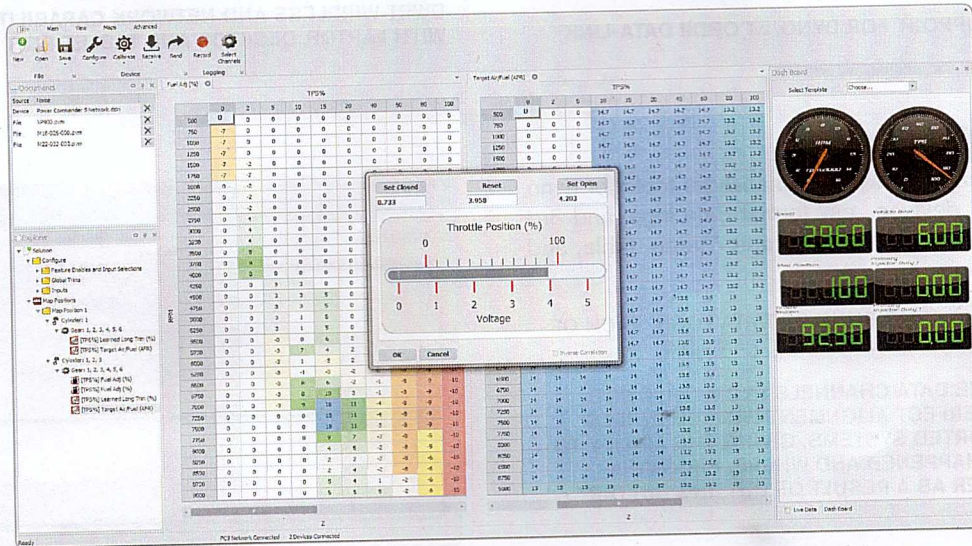
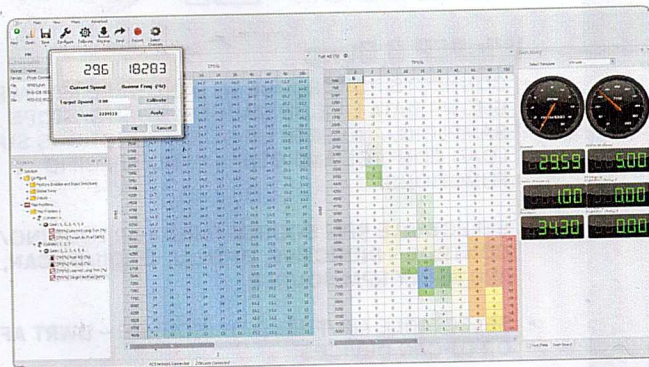
POWER CORE SOFTWARE SUITE



CONFIGURE - CALIBRATE - CONTROL

The new C3 software takes the familiar Power Commander Control Center software and brings it to a new level. Now the end user has full control over their Power Commander allowing them to configure their setup in an infinite number of ways.

- CREATE MAPS WITH UP TO 30 TP (THROTTLE POSITION) COLUMNS AND ANY VALUE THE END USER DESIRES.
- CONFIGURE ADVANCE MAPS LINKING MULTIPLE CYLINDERS TOGETHER ALLOWING A 4 CYLINDER ENGINE TO USE THE DUAL CHANNEL AUTO TUNE.
- COMPARE MULTIPLE PCV MAPS SIDE BY SIDE
- INTEGRATED TUNING LINK SOFTWARE
- DATA LOG ALL PCV CHANNELS. DISPLAY LOGS IN GRAPH FORM THRU DATA ANALYSIS SOFTWARE
- AUTOMATIC UPDATES THROUGH DYNOJET'S WEB SERVER

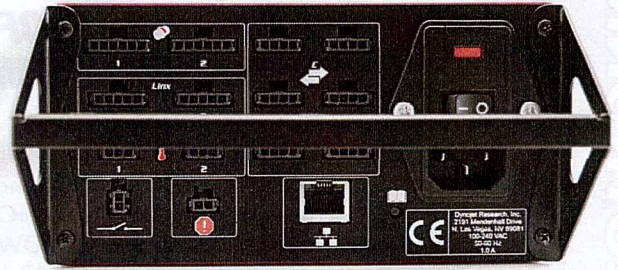


NEW DynoWare RT

AFR-2 –

Now with DynoWare RT (DWRT) and the AFR-2 you can measure two air/fuel ratios at once. The Main Control Module houses the Dynojet Gen4 Air Pump for maintenance-free sampling of air/fuel ratio from the tailpipe of a vehicle and comes standard with one wideband oxygen sensor. There are two O2 sensor fittings on the module, so a second O2 sensor can be added, for dual bank AFR readings. AFR-2 can be daisy-chained for adding additional AFR-2 modules for reading multi-cylinder air/fuel ratio.

- TWO WIDEBAND O2 SENSOR INPUTS
- INTEGRATED GEN4 AIR PUMP



REAR OF MAIN CONTROL MODULE

- EXPANDABLE VIA DJ-CAN CONNECTION REAR OF MAIN CONTROL MODULE

Analog Channel Accessories –

DWRT comes standard with four (4) analog inputs for 0-5v sensors. Sensor kits are available for connecting Dynojet analog sensors or customer supplied sensors to DWRT.

- | | | |
|--|---|---|
| <ul style="list-style-type: none"> ▪ ANALOG SENSOR CABLE KIT- Includes four (4) complete harnesses for connecting up to four customer supplied 0-5v analog sensors to DWRT. Not required when using Dynojet sensor kits to the right. | <ul style="list-style-type: none"> ▪ -14.7-45PSI PRESSURE SENSOR KIT- Includes one (1) sensor and harness. ▪ 0-100PSI PRESSURE SENSOR KIT- Includes one (1) sensor and harness. | <ul style="list-style-type: none"> ▪ 0-500F THERMOCOUPLE AMP KIT- Includes one (1) thermocouple amplifier and harness. ▪ 0-2000F THERMOCOUPLE AMP KIT- Includes one (1) thermocouple amplifier and harness. |
|--|---|---|

HD Data-Link-

Connect J1850 or CAN ECM's and stream live data into DWRT for real-time view, sampling and use in the PowerCore software suite.

IR- Temp Sensor-

Infrared temperature sensor kit. Includes magnetic base, 0-500F sensor and harness for measuring surface temperatures. Two IR Temp sensors can be connected to DWRT.

Remote Atmospheric Sensor-

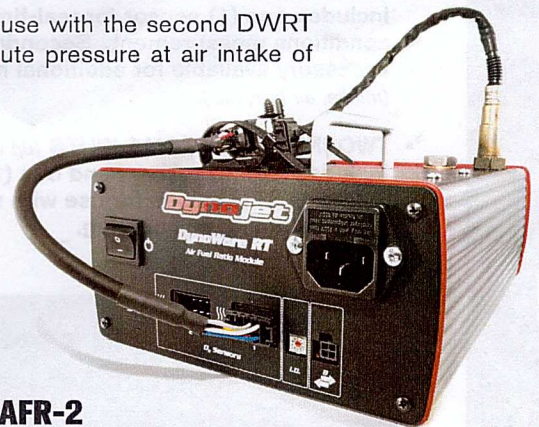
Includes magnetic atmospheric sensor with 20' cable length. For use with the second DWRT atmospheric channel for reading temperature, humidity and absolute pressure at air intake of vehicle or elsewhere.

Optical RPM Sensor-

Includes magnetic base, optical sensor and reflective tape. Measure supercharger pulley slippage or tire spin. Two optical sensors can be connected to DWRT.

*DJ-CAN Devices –

Connect Dynojet Products such as the Power Vision, PCV (Power Commander V), Auto Tune or CMD (Combustion Management Device) directly to DWRT. This allows DWRT and PowerCore software suite to use any of the data from the device (such as engine RPM, throttle position, air/fuel ratio, boost pressure and more) for advanced diagnostics and tuning.



AFR-2

- TWO WIDEBAND O2 SENSOR INPUTS
- INTEGRATED GEN4 AIR PUMP
- EXPANDABLE VIA DJ-CAN CONNECTION